



Exposure risk assessment and evaluation of the best management practice for controlling pesticide runoff from paddy fields. Part 2: Model simulation for herbicide pretilachlor

Journal:	<i>Pest Management Science</i>
Manuscript ID:	PM-10-0066.R1
Wiley - Manuscript type:	Original Article
Date Submitted by the Author:	28-Mar-2010
Complete List of Authors:	Thai, Phong; Kyushu University, Department of Bioproduction Environmental Sciences
Key Words:	paddy block, drainage canal, PCPF, rice pesticide



Deleted: (BMPs)

Management Practices for reducing runoff of pretilachlor into canal. The probabilistic model predictions using actual data of pesticide use and hydrological data in the canal showed that the water holding period (WHP) and the excess water storage depth (EWSD) effectively reduced the loss and concentration of pretilachlor from paddy fields to the drainage canal. The WHP also reduced the time span of pesticide exposure in the drainage canal.

CONCLUSIONS: It is recommended that: 1) Applying the WHP as long as possible but at least 7 days depending on the pesticide and field conditions; 2) Maintaining a EWSD greater than 2 cm to store substantial rainfall to prevent paddy runoff especially during the WHP.

Key words: paddy block, drainage canal, PCPF, rice pesticide.

* Correspondence to: Hirozumi Watanabe, Tokyo University of Agriculture and Technology, Graduate School of Agriculture, 3-5-8 Saiwaicho, Tokyo 183-8509, Japan
E-mail: pochi@cc.tuat.ac.jp

1 INTRODUCTION

In the companion paper¹ we have described the monitoring of pesticide runoff in a small paddy watershed in Central Japan. The monitoring results showed that the problem of pesticide contamination caused by paddy fields effluent is still imminent. High concentrations of pesticides were found in the outlets of main and secondary drainage canals. Nakano *et al.*² also reported pesticide concentrations of 10 – 90 $\mu\text{g L}^{-1}$ at the outlet of a paddy drainage canal. An estimated considerable percentage of applied pesticides were

1 reportedly lost through surface drainage/runoff water to the drainage canal.¹ Therefore,
2 controlling pesticide runoff from paddy fields to the environment is still an important
3 aspect of sustainable rice cultivation.

4 Some management practices such as the water holding practice (WHP), the period during
5 which no water is intentionally released from paddy plots and the excess water storage
6 depth (EWSD), the extra depth obtained by the high boundary of a paddy plot to
7 accommodate excess precipitation, have proved effective in controlling pesticide runoff
8 from paddy plots by experiments as well as simulations.^{1,3,4} However, it is also necessary to
9 evaluate the effectiveness of those practices at larger scale such as paddy block or paddy
10 watershed. At this large scale, experimental evaluation would be costly and the use of
11 simulation model would be a good alternative for this purpose.

12 Few simulation models for pesticide behavior in a rice paddy field system have been
13 developed for assessing the potential exposure of a pesticide. For a paddy plot scale,
14 RICEWQ,⁵ PADDY,⁶ and PCPF-1⁷ has been used for simulating pesticide concentration in
15 paddy water and surface soil under different paddy conditions. RICEWQ and PADDY
16 models also have their corresponding models for river system, RIVWQ and PADDY-
17 Large.^{8,9} However, the algorithms used for pesticide application in those models were
18 either based on a simultaneous and homogeneous application or a normal distribution
19 application, which makes them inapplicable for paddy blocks where the number of
20 pesticide application events is limited and is totally dependent on farmers' schedules. An
21 extended version of PCPF-1, namely PCPF-B, has been developed to deal with this issue¹⁰
22 and thus could be used to evaluate the management practices of a paddy block.

23 Probabilistic approaches to environmental risk assessment for pesticides are widely
24 accepted as they can quantify the uncertainty associated with model prediction and

Formatted: Justified

Deleted: risk

1 generate meaningful outputs for decision-making processes.¹¹ It is increasingly recognized
2 that the uncertainty in model input parameters should be taken into account in regulatory
3 decision-making at higher tiers. However, until now only few probabilistic risk
4 assessments have been done for rice pesticides used in the monsoon Asian region.^{12,13}

5 The objectives of this paper were to evaluate a block scale model for predicting rice
6 pesticide concentration in the drainage canals with monitoring data and to apply this model
7 to evaluate the Best Management Practices for reducing pesticide runoff from paddy blocks
8 using a constrained probabilistic approach. Pretilachlor, a commonly used rice herbicide in
9 Japan, was the target compound in this study.

Deleted: (BMPs)

11 2 MATERIALS AND METHOD

12 2.1 Model description

13 The PCPF-B model (Fig. 1) was developed to simulate rice pesticides concentration in the
14 drainage canal of paddy blocks. The paddy block can comprise a dozen paddy plots of
15 different areas. A description of the PCPF-B model can be found elsewhere.¹⁰ Compared to
16 river scale models like RIVWQ, PCPF-B can simulate different pesticide application
17 scenarios (application dates and areas) such as using normal distribution or uniform
18 distribution or using specific dates. The model simulates pesticide fate and transport in a
19 paddy block, which ranges from a few ha to few tens of ha.

20 In the PCPF-B model, paddy water is considered directly released into major
21 canals/tributaries and the length of the canals within the block is relatively short (about a
22 few hundred meters for a block of less than 10 ha), the pesticide residence time in the canal
23 or the time needed for transporting pesticide from paddy plots to the outlet of the block is

1 short. Hence, it is assumed that the process of pesticide dissipation in canal water can be
2 neglected in the model.

3 The water balance data used for simulation is fed during model execution using
4 monitoring data from the field. The water balance can also be calculated automatically in
5 case monitoring data is not available.

6 The PCPF-B model's program is coded using Visual Basic for Applications in
7 Microsoft Excel as for the PCPF-1 model. The Excel file includes a Macro program of
8 PCPF-B, datasheets for input parameters, and daily water balance and daily UV-B radiation
9 received on paddy water.

Deleted: calculating the above equations

Deleted: also

11 2.2 Observed data for model evaluation

12 To evaluate the PCPF-B model before any application, monitoring data presented in the
13 companion paper¹ was used. A paddy block (block 2) located inside the monitored
14 watershed in Sakura river basin, Ibaraki prefecture, Japan was selected with detailed
15 monitoring data. Total paddy area of the target block is 5.32 ha with 17 paddy plots (5.06
16 ha) and 1 upland plot (0.26 ha) as shown in Fig. 2. The monitoring data of 2004 was used
17 as it came with the information on pesticide use including pesticide products, application
18 rate, application dates as well as applied areas in block 2 in the year of 2004, which were
19 collected from farmers using questionnaires. Water samples were taken at different dates at
20 the outlet of the canal to measure pesticide concentration in canal water by gas
21 chromatography. Details about the monitoring and sample analysis were presented in the
22 companion paper.¹

24 2.3 Statistics evaluation

1 Model performance was assessed by statistical indices, including root mean square error
2 (RMSE) and modeling efficiency (EF) in equations (1) and (2):

$$3 \quad RMSE = \frac{100}{\bar{O}} \sqrt{\frac{\sum_{i=1}^n (P_i - O_i)^2}{n}} \quad (1)$$

$$4 \quad EF = \frac{\sum (O_i - \bar{O})^2 - \sum (P_i - O_i)^2}{\sum (O_i - \bar{O})^2} \quad (2)$$

5 where P_i and O_i are the predicted and observed values, respectively, \bar{O} is the average of
6 the observed values and n is the number of observations. In general, the lower the RMSE,
7 the higher is the agreement between the measured and the predicted data. In contrast, the
8 optimal value for EF is 1; thus, the closer to 1 the values of EF, the greater is the
9 correspondence between measured and predicted data.¹⁴

11 2.4 Application of model to evaluate the Best Management Practices

12 For the evaluation of the Best Management Practices to reduce pesticide runoff from paddy
13 fields, different scenarios for water management practice were established, in which the
14 main factors of water management such as WHP and EWSD were considered. The field
15 condition (area, number of plots, number of applied plots) of block 2 were used as a
16 realistic scenario for this evaluation. The relationship between management factors (WHP,
17 EWSD) with the pesticide concentrations in canal and cumulative pesticide losses via
18 surface drainage was established in order to evaluate appropriate field management for
19 reducing pesticide runoff from paddy fields.

20 The target compound, pretilachlor [2-chloro-2',6'-diethyl-N-(2-propoxyethyl)acetanilide],
21 is a popular herbicide in Japan and in the world. Pretilachlor is widely used in transplanted

Deleted: BMPs

Deleted: BMPs

1 and direct seeded rice for the control of several grasses, broad-leaved weeds and sedges. In
2 block 2, pretilachlor, as active ingredient of one commercial product (Sparkstar), was
3 applied to 4 plots (Fig. 2). Therefore, the application rate was the same in all applied plots.
4 The application dates were acquired through questionnaires and fed to the model.
5 Properties of this herbicide were determined and used previously for simulation¹⁵ and will
6 be used in this study as deterministic values.

7 The PCPF-B simulation was applied using probabilistic approach incorporating the
8 variability in rainfall pattern as rainfall is the main cause of runoff from paddy plots during
9 water holding period.^{1,16} For this purpose, meteorological data including rainfall and solar
10 radiation were collected from a 26-year archive (1984-2009), which is all data available
11 from the meteorological station in Tsukuba, Ibaraki, Japan, which is close to the study site.
12 Evapotranspiration (ET) was estimated using FAO-56 method¹⁷ with corresponding
13 meteorological data. Sets of rainfall, ET and solar radiation during the month of May
14 would be used as input values for probabilistic simulations since it is the time of pesticide
15 application and thus has the highest risk of pesticide runoff to the environment.

16 Other data concerning water management used for water balance calculation was
17 presented in Table 2. Management practices such as WHP and EWSD were set for each
18 scenario. Then the water balance was automatically calculated. Water level in each plot
19 was kept between the maximum and minimum paddy water depths (H_{\max} and H_{\min}).
20 Irrigation was used to control the water level. It means that on days when the water level
21 was below H_{\min} irrigation water was added to raise the paddy water level to H_{\max} . Other
22 components such as rainfall, percolation, and evapotranspiration were included in the
23 calculation. During the WHP, the height of the drainage gate (H_{gate}) was set equal to the
24 sum of H_{\max} and EWSD. Only when water level higher than H_{gate} did runoff occur.

1 However, after the WHP, daily drainage occurred at a rate similar to the average
2 monitoring data reported previously.¹

3 Meanwhile, the other input parameters concerning field conditions were fixed as
4 deterministic values. It was intended for easy comparison of simulation results between
5 management scenarios.

6 The Monte Carlo technique, a widely used method for probabilistic assessment and
7 uncertainty analysis, was incorporated into the PCPF-B model. The method involves
8 random sampling of inputs and successive model runs until a stable statistical distribution
9 of outputs is obtained. In this study, Monte Carlo technique was run for 2500 iterations.
10 The running of the PCPF-B model and the extraction of the relevant model outputs can be
11 automated using the commercially available software package Crystal Ball 7
12 (Decisioneering Inc., US), which is suitable for a spreadsheet model in Excel environment
13 like the PCPF-B.

15 3 RESULTS

16 3.1 Observed water balance for deterministic simulation

17 Major water balance components of the monitored block in 2004 including daily rainfall,
18 irrigation and drainage as well as canal inflow and outflow were presented in Fig. 3. Daily
19 drainage/runoff from the paddy fields was estimated from the balance of the drainage canal,
20 being equal to the subtraction of the canal inflow from the canal outflow. Daily irrigation
21 was calculated using the water balance equation of the paddy compartment with estimated
22 percolation, seepage, evapotranspiration and paddy water depth (H_{pw}). Significant runoff
23 occurred during large rainfall events (Fig. 3). During the early period of May, the
24 increasing surface drainage was probably because farmers released paddy water during

Deleted:

1 transplanting period to have optimum paddy water depth. However, this water balance
2 estimation did not contain any information about the practice of water managements such
3 as EWSD and WHP. Because the canal inflow consisted of water discharge from a
4 irrigation pipe, it was intermittent and not corresponding to rainfall events. The canal
5 outflow was responsive to rainfall events and surface drainage from the paddy plots in
6 block 2.

Deleted: sediment flush valve setup at
the end of the

Deleted: system

8 3.2 Model evaluation

9 Input parameters for the model execution are presented in Table 1. The estimated water
10 balance of the monitored block (Fig. 3) was used for the deterministic runs. Pretilachlor
11 was applied in several plots (Fig. 2) in three different dates. The total applied area of
12 pretilachlor was 1.18 ha, corresponding to 22.1% of the block area.

13 The average flow velocity in the canal was about 0.06 m s^{-1} . With the length of the
14 receiving canal of 320 m, the average residential time of pesticide in the canal was
15 estimated as 1.5 hours. The bottom of the canal consists of heavy clay soil and a layer of
16 small gravel. Therefore, the adsorption/desorption of pesticides may be negligible. And
17 because of such short retention time, neglecting the processes of pesticide dissipation in
18 canal water was considered reasonable.

Deleted: B

19 Fig. 4 shows the results of the deterministic model evaluation. Simulated pretilachlor
20 concentrations with deterministic parameter indicated general trend and magnitude of
21 pesticide concentrations in canal water. The simulated concentrations in the individual
22 plots (data not shown) were similar with those reported in other study.¹⁵ The simulated
23 curves at the block outlet agreed with the observed data although slight over-estimation
24 was observed. Since no drainage canal of upstream block flows through the studied block

1 | and the canal inflow was of irrigation water only, the observed pretilachlor concentrations
2 | in the canal water were not affected by the runoff of pretilachlor applied in other paddy
3 | blocks. Both simulated and observed data have concentration peaks corresponding to major
4 | application dates in the block but there were some minor peaks in the simulated curves due
5 | to the fluctuation of canal inflow, causing different dilution factors from day to day. The
6 | occurrence of the main peaks were close to the application dates when concentration of
7 | pretilachlor in the individual plots was high. And its occurrence also depends on the
8 | drainage rate of the block. It can be observed that during the early period after pesticide
9 | application a peak in drainage/runoff rate corresponded to a peak in pesticide concentration
10 | in the drainage canal.

11 | The RSME and EF values calculated for PCPF-B from the simulated results were 87.5
12 | and 0.72, respectively. The values of these two statistic indices in this study were slightly
13 | farther away from ideal values than those reported for paddy water but similar to those
14 | reported for paddy soil in plot-scale simulation.^{5,14} Therefore, it was seen as acceptable
15 | considering much greater uncertainty in block-scale simulation.

Deleted: sediment

16 | The overestimation observed in this simulation was probably due to the better-than-
17 | expected water management in the studied block, which resulted in less pesticide runoff
18 | amount from treated plots than what was estimated in our water balance calculation. With
19 | the fact that farmers, mostly part-time farmers, practiced water management as they wished,
20 | uncertainty in water balance was high for block-scale simulation. Our assumption of no
21 | pesticide dissipation and interaction in the canal may also contribute to the overestimation.
22 | Meanwhile, greater overestimation was reported for other pesticide models applied to block
23 | scale drainage canals.^{18,19}

3.3 Model application

Having an acceptable performance, the PCPF-B model was used to evaluate the effectiveness of two water management practices, WHP and EWSD, in controlling pesticide runoff at paddy block scale. Mean predicted cumulative loss and 50 percentile predicted concentration of pretilachlor in the drainage canal were used as criteria for the evaluation.

3.3.1 Effect on cumulative loss

Fig. 5 presented the effect of combined WHP and EWSD practices to the mean cumulative loss of pretilachlor in the block. It is observed that the application of WHP and EWSD as Best Management Practices, reduced the loss of pesticide. The decline in cumulative loss of pretilachlor was proportional with the increase of WHP. Simple linear regression resulted in equations with high correlation coefficient (Table 3). The slope of the equation is greater when higher EWSD was applied.

The monitored cumulative loss through surface drainage in block 2 was about 15% of the applied mass of pretilachlor. An observed cumulative loss of 14.1% for pretilachlor in a small paddy watershed was also reported by Nakano *et al.*² Corresponding value obtained from the deterministic simulations was 25.5%. The difference between observed and simulated herbicide losses might be explained by the fact that calculation of observed herbicide loss using weekly sampling data might lead to significant errors because it may miss some considerable peak concentrations between sampling dates. A finer sampling schedule is preferred for accurate calculation of herbicide mass discharge.

3.3.2 Effect on concentration

The application of Best Management Practices, not only reduced the cumulative loss of pretilachlor but also prevented the occurrence of high concentrations of pesticides in canal

Deleted: BMPs

Deleted: BMP

1 water. The 50 percentile simulated concentrations of pretilachlor ranged from about 60 μg
 2 L^{-1} when no Best Management Practice was applied to about 15 μg L^{-1} when a 14-day
 3 holding period was applied (Fig. 6). In Fig. 6, while WHP showed its effect, ESWD did not
 4 significantly influence the maximum concentration of pretilachlor in the drainage canal. It
 5 is because in general (50 percentile range), there was no runoff during the water holding
 6 period and pretilachlor only appeared in the drainage canal after WHP when water was
 7 released daily from the block in form of drainage and no EWSD remained. Therefore,
 8 regardless of the applied EWSD, it had no effect on the concentrations of pretilachlor in the
 9 canal. Meanwhile, comparison of 90 and 100 percentile simulated concentrations of
 10 pretilachlor (data not shown) showed that ESWD of 2 cm or higher would reduce the
 11 occurrence of high concentration of pretilachlor during the water holding period in most of
 12 the cases except in large rainfall events. Maximum mean concentration of pretilachlor in
 13 canal water decreased exponentially with the increase of WHP as a consequence of the
 14 exponential degradation of pesticide inside the plot.

16 4 DISCUSSION

17 PCPF-B model was able to simulate the general behavior of pretilachlor in the drainage
 18 canal when estimated water balance was available. The simulation by PCPF-B is rather
 19 conservative due to its assumption of no dissipation in the drainage canal. It led to the
 20 overestimation of concentration in canal water although the predicted plot concentration
 21 was still comparable with observed data. However, the performance of the model was
 22 considered acceptable. Improvement could be made by including dissipation processes in
 23 the canal as well as seepage inflow from adjacent plots.

Deleted: PTC

Deleted: BMP

Deleted: the

Deleted: WHP

Deleted:

Deleted: those

Deleted: concentrations

Deleted: fell into the period

Deleted: .

Deleted: C

1
2
3
4
5
6
7
8
9
10
11
12
13
14
15
16
17
18
19
20
21
22
23
24
25
26
27
28
29
30
31
32
33
34
35
36
37
38
39
40
41
42
43
44
45
46
47
48
49
50
51
52
53
54
55
56
57
58
59
60

The constrained probabilistic assessment for WHP and EWSD against meteorological data for a paddy block in Central Japan gained an encouraging result. Application of appropriate WHP and EWSD can reduce both pesticide loss and pesticide concentration in the drainage canal. Combination of 14-day WHP and 3-cm EWSD has the potential of reducing more than 60% of pesticide loss compared to no Best Management Practice, applied scenario. However, as the current Japanese recommendation for WHP printed on pesticide labels is only 3-4 days for all rice pesticides and no practice of EWSD is mentioned for the rice crop spanning the monsoon season, significant loss and high concentration of pesticide in the drainage canal is still expected as in the monitored data. The extension of WHP and the implementation of appropriate EWSD altogether are thus necessary to reduce the discharge of pesticide to the drainage canal.

Deleted: BMP

Establishing an appropriate WHP is not new in rice cultivation. There have been reports on WHP as Best Management Practice, to reduce the loss of pesticides. In California, depending on the pesticide, various WHP have been gradually applied and extended (up to 28 days for molinate and 30 days for thiobencarb).²⁰ But further extension of WHP was not recommended as it would affect other aspects of the crop such as problem of salinity or rice plant physiology.²⁰ In Japan, keeping the water inside paddy plots for a prolonged period is not welcome in shallow water rice cultivation where farmers want moving water to stimulate the growth of rice plants. Until 2005, a WHP of only 3-4 days had been recommended in pesticide label firstly to ensure high effectiveness of the product and secondly to protect the environment. But recent monitoring still showed that farmers drain their plots only 1 – 3 days after pesticide application.²¹ An increase of WHP to 7 days was currently recommended for all rice pesticides²² with complete stop of irrigation but the dissemination of information seems to be limited and there is no incentive for farmers to

Deleted: BMP

1 follow the WHP recommendation. However, in order to reduce the environmental pollution
2 caused by rice pesticides previous monitoring studies suggested increasing the WHP to
3 more than 10 days based on the 90% dissipation time (DT₉₀) of the studied pesticide.^{1,23}
4 Results from this study indicated that pesticide discharge after a 14-day WHP can still
5 produce high concentration of pretilachlor in canal water and therefore the WHP should be
6 extended to as long as possible but at least 7 days according to the Ministerial guideline.²²

7 Holding water inside paddy plots can be managed relatively easy under Mediterranean
8 climate by maintaining the target water depth with irrigation because significant rainfall
9 during the crop season rarely occurs. However, under Asian monsoon climate rainfall often
10 occurs during and after the pesticide application period, sometime causing considerable
11 paddy runoff. There are in average 12 rainfall events in May in the study area with about
12 15% of them larger than 2 cm. And our simulations have shown that creating and
13 maintaining an appropriate EWSD is effective to prevent runoff during rainfall events in
14 this area. Therefore, we propose that a EWSD from 2 to 3 cm needs to be maintained for
15 controlling pesticide runoff from paddy fields in regions like Central Japan where moderate
16 rainfall is expected. For more intensive rainfall prone regions, higher EWSD may be
17 necessary to contain the rainfall water.

18 Together with the proposed management practices, extension work to disseminate the
19 information to rice farmers is also important because of the low awareness on water
20 management in pesticide runoff control in paddy fields as well as the complexity of the
21 pesticide runoff process. However, further study is required for developing practical
22 methods and apparatus for setting the appropriate EWSDs in the fields which complement
23 farming practices and maintain healthy crop production.

24

5 CONCLUSIONS

A simulation model for predicting concentration of pesticide in the drainage canal of a paddy field block (PCPF-B) was validated and then applied to a constrained probabilistic approach for evaluating water management practices for controlling pesticide runoff from paddy fields. The proposed activities for reducing pesticide runoff from paddy fields in a monsoon region such as in Japan were as follow:

- Applying the WHP and extending the WHP from the current recommendation 7 days to as long as possible depending on field and plant conditions.
- Maintaining EWSD of about 2-3 cm in the paddy plot to store substantial rainfall amount in order to prevent paddy runoff during the WHP.
- Establishing a network of extension and enforcement so that farmers would be aware of and implement the proposed management practices.

ACKNOWLEDGEMENT

This paper was produced when Thai Khanh Phong is a JSPS postdoctoral fellow at the Faculty of Agriculture, Kyushu University. Thanks are due to Mr. Taku Tanaka for his assistance on the water balance analysis.

REFERENCE

- 1 Son H V, Satoru I and Hirozumi W, Exposure risk assessment and evaluation of the best management practice for controlling pesticide runoff from paddy fields. Part 1: Paddy watershed monitoring. *Pest Management Science* **62**:1193-1206 (2006)
- 2 Nakano Y, Miyazaki A, Yoshida T, Ono K and Inoue T, A study on pesticide runoff from paddy fields to a river in rural region--1: field survey of pesticide runoff in the Kozakura River, Japan. *Water Research* **38**:3017-3022 (2004)

- 1 3 Watanabe H, Nguyen MHT, Souphasay K, Vu SH, Phong TK, Tournebize J and
2 Ishihara S, Effect of water management practice on pesticide behavior in paddy
3 water. *Agricultural Water Management* **88**:132-140 (2007)
- 4 4 Phong TK, Watanabe H, Hien TQ, Vu SH, Tanaka T, Nhung DTT and
5 Motobayashi T, Excess water storage depth: a water management practice to
6 control simetryn and thiobencarb runoff from paddy fields. *Journal of Pesticide
7 Science* **33**:159-165 (2008)
- 8 5 Karpouzas DG, Ferrero A, Vidotto F and Capri E, Application of the RICEWQ-
9 VADOFT model for simulating the environmental fate of pretilachlor in rice
10 paddies. *Environmental Toxicology and Chemistry* **24**:1007-1017 (2005)
- 11 6 Keiya Inao and Yasuo Kitamura, Pesticide paddy field model (PADDY) for
12 predicting pesticide concentrations in water and soil in paddy fields. *Pesticide
13 Science* **55**:38-46 (1999)
- 14 7 Watanabe H, Takagi K and Son HV, Simulation of mefenacet concentrations in
15 paddy fields by an improved PCPF-1 model. *Pest Management Science* **62**:20-29
16 (2006)
- 17 8 Karpouzas DG and Capri E, Risk analysis of pesticides applied to rice paddies
18 using RICEWQ 1.6.2v and RIVWQ 2.02. *Paddy and Water Environment* **4**:29-38
19 (2006)
- 20 9 Inao K, Ishii Y, Kobara Y and Kitamura Y, Landscape-scale simulation of pesticide
21 behavior in river basin due to runoff from paddy fields using pesticide paddy field
22 model (PADDY). *Journal of Pesticide Sciences* **28**:24-32 (2003)
- 23 10 Phong TK, Hiramatsu K, Vu SH, Ishihara S and Watanabe H, Simulation of
24 Pesticide Behavior in a Paddy Block by a Pesticide Fate and Transport Model. *J.
25 Fac. Agr., Kyushu Univ.* **54**:505-512 (2009)
- 26 11 Dubus IG, Brown CD and Beulke S, Sources of uncertainty in pesticide fate
27 modelling. *The Science of The Total Environment* **317**:53-72 (2003)
- 28 12 Matsui Y, Narita K, Inoue T and Matsushita T, Screening level analysis for
29 monitoring pesticide in river water using a hydrological diffuse pollution model
30 with limited input data. *Water Science and Technology* **173**-181 (2006)
- 31 13 Matsui Y, Narita K, Inoue T and Matsushita T, Investigating rice-farming pesticide
32 concentrations in river water using a basin-scale runoff model with uncertain inputs.
33 *Transactions of the ASABE* **49**:1723-1735 (2006)
- 34 14 Karpouzas DG, Cervelli S, Watanabe H, Capri E and Ferrero A, Pesticide exposure
35 assessment in rice paddies in Europe: A comparative study of existing mathematical
36 models. *Pest Management Science* **62**:624-636 (2006)
- 37 15 Watanabe H and Takagi K, A simulation model for predicting pesticide
38 concentrations in paddy water and surface soil II. Model validation and application.
39 *Environmental Technology* **21**:1393-1404 (2000)
- 40 16 Phong T, Nhung D, Motobayashi T, Thuyet D and Watanabe H, Fate and Transport
41 of Nursery-Box-Applied Tricyclazole and Imidacloprid in Paddy Fields. *Water, Air,
42 & Soil Pollution* **202**:3-12 (2009)
- 43 17 Vu SH, Watanabe H and Takagi K, Application of FAO-56 for evaluating
44 evapotranspiration in simulation of pollutant runoff from paddy rice field in Japan.
45 *Agricultural Water Management* **76**:195-210 (2005)
- 46 18 Brown CD, Dubus IG, Fogg P, Spirlet M and Gustin C, Exposure to sulfosulfuron
47 in agricultural drainage ditches: Field monitoring and scenario-based modelling.
48 *Pest Management Science* **60**:765-776 (2004)

- 1
2
3
4
5
6
7
8
9
10
11
12
13
14
15
16
17
18
19
20
21
22
23
24
25
26
27
28
29
30
31
32
33
34
35
36
37
38
39
40
41
42
43
44
45
46
47
48
49
50
51
52
53
54
55
56
57
58
59
60
- 1 19 Renaud FG and Brown CD, Simulating pesticides in ditches to assess ecological risk (SPIDER): II. Benchmarking for the drainage model. *Science of the Total Environment* **394**:124-133 (2008)
- 2
3
4 20 Newhart K, Rice Pesticide Use and Surface Water Monitoring 2002.
5
6 <http://www.cdpr.ca.gov/docs/emon/surfwtr/riceprog.htm> [accessed 10 February
7 2010]
- 8 21 Yoshino K, Phong TK, Hiramatsu K, Harada M, Kondo K, Watanabe H and Inoue
9 T, Water management and water balance estimation in a paddy block: A case study
10 in Kurume city, Fukuoka. The 6th International Joint Symposium between Japan
11 and Korea: The Recent Status and Perspectives of Food System, Agricultural
12 Environment, Biology and Biotechnology in 2009. Fukuoka, Japan. 2009
- 13 22 MOE, Introduction of outflow prevention technology of agricultural chemicals.
14 <http://www.env.go.jp/water/dojo/novaku/sppt.html> (2009)
- 15 23 Watanabe H, Kakegawa Y and Son HV, Evaluation of the management practice for
16 controlling herbicide runoff from paddy fields using intermittent and spillover-
17 irrigation schemes. *Paddy and Water Environment* **4**:21-28 (2006)

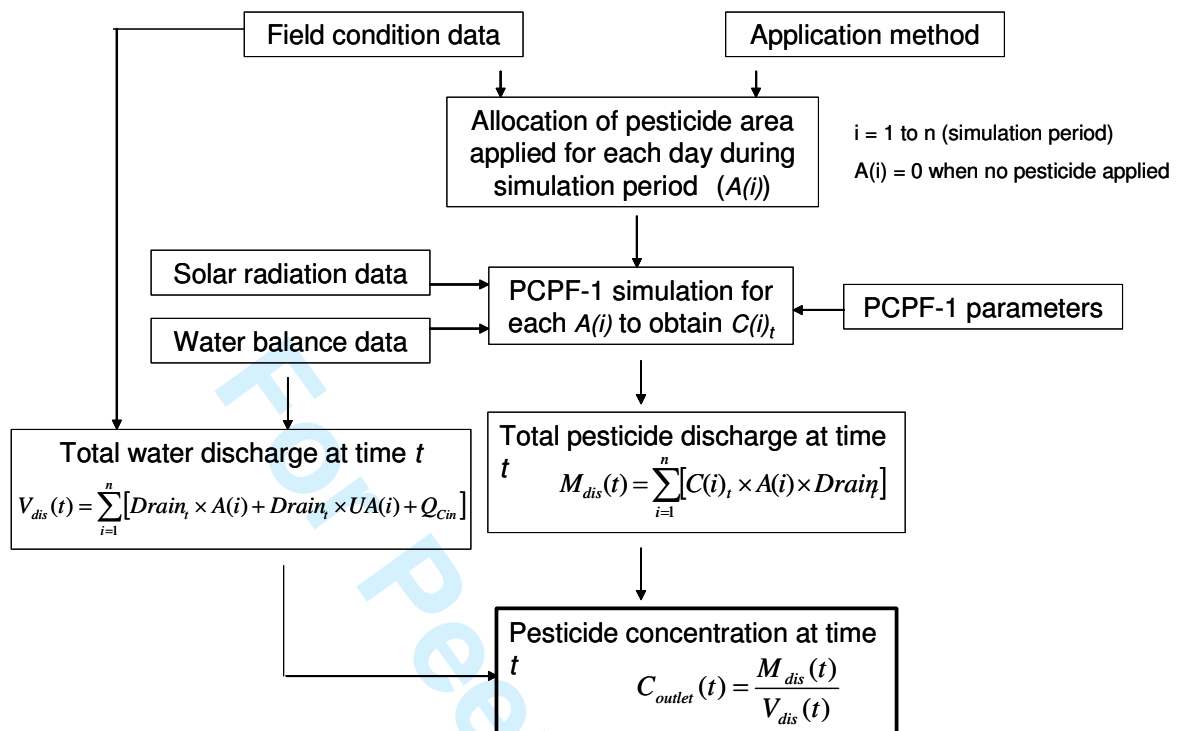


Figure 1. Diagram of the PCPF-B model.

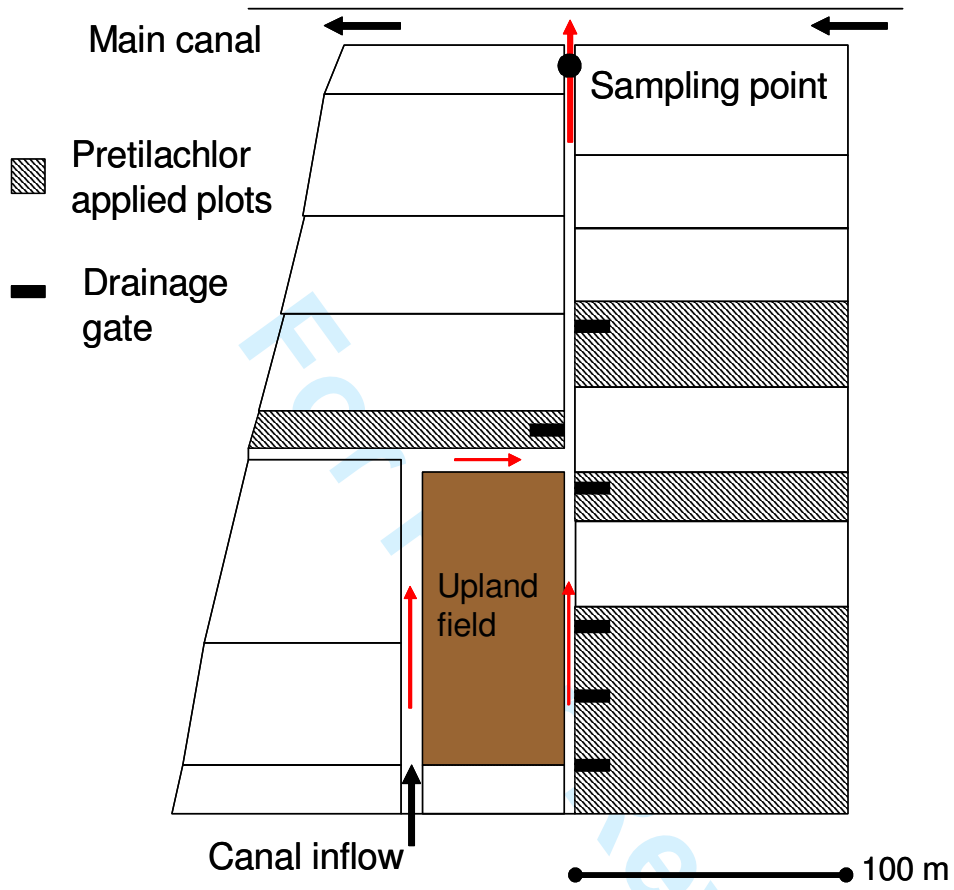


Figure 2. Description of the studied paddy block with pretilachlor applied plots.

1
2
3
4
5
6
7
8
9
10
11
12
13
14
15
16
17
18
19
20
21
22
23
24
25
26
27
28
29
30
31
32
33
34
35
36
37
38
39
40
41
42
43
44
45
46
47
48
49
50
51
52
53
54
55
56
57
58
59
60

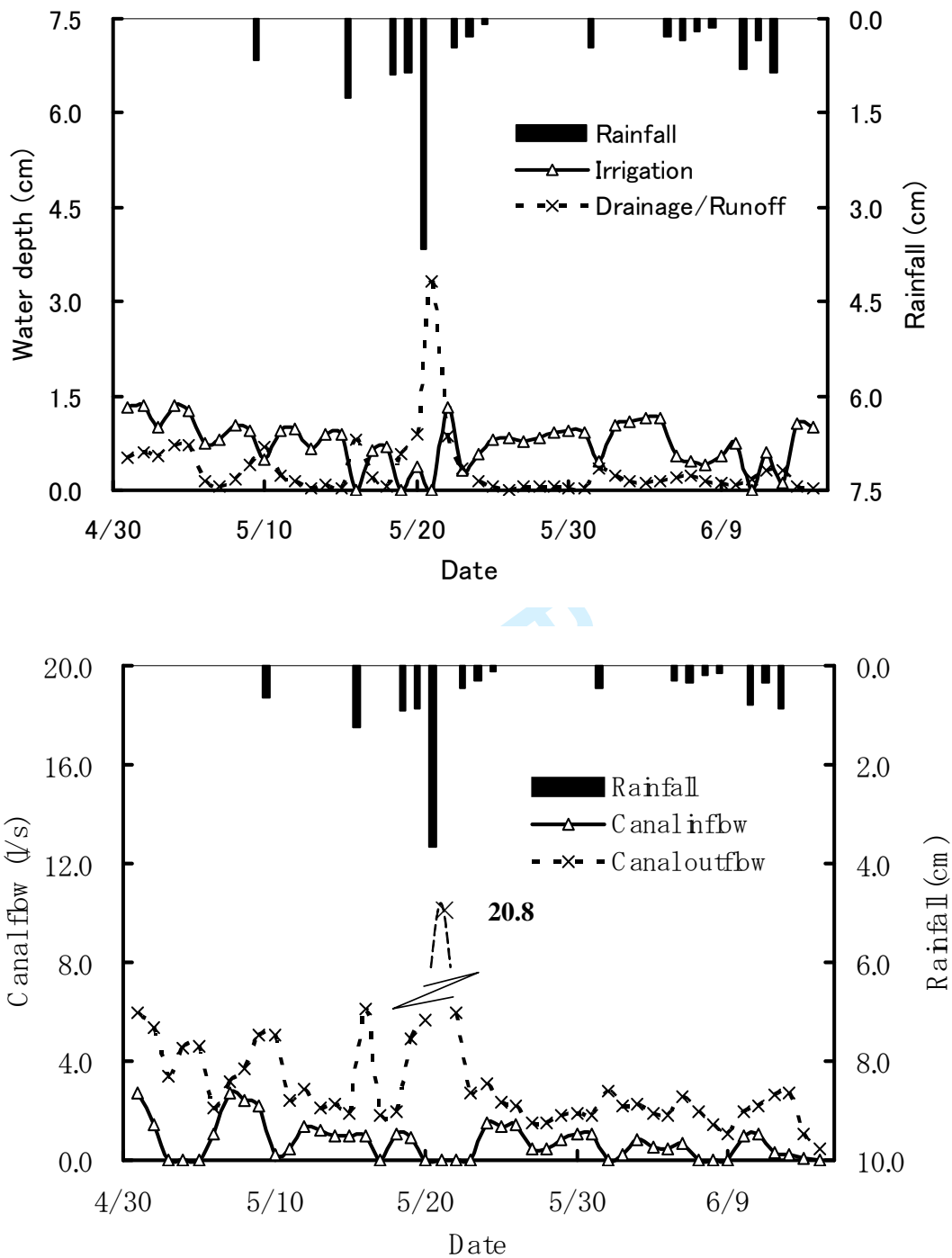


Figure 3. Main water balance components of block 2 during the monitoring period

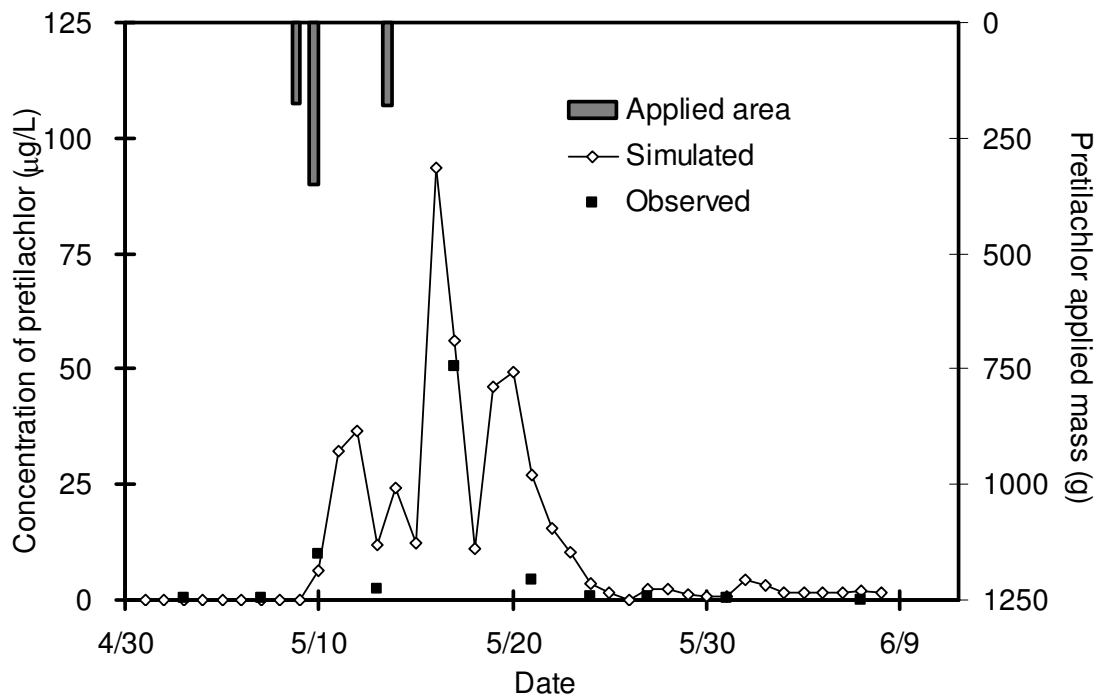


Figure 4. Herbicide concentrations in drainage canal water

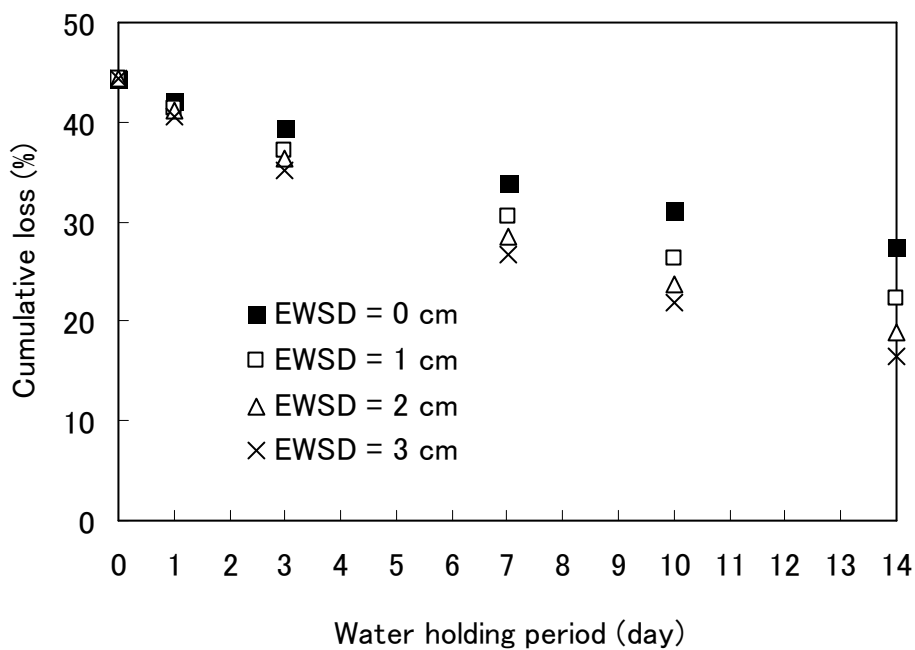


Figure 5. Mean cumulative losses of pretilachlor to the drainage canal under different water management scenarios

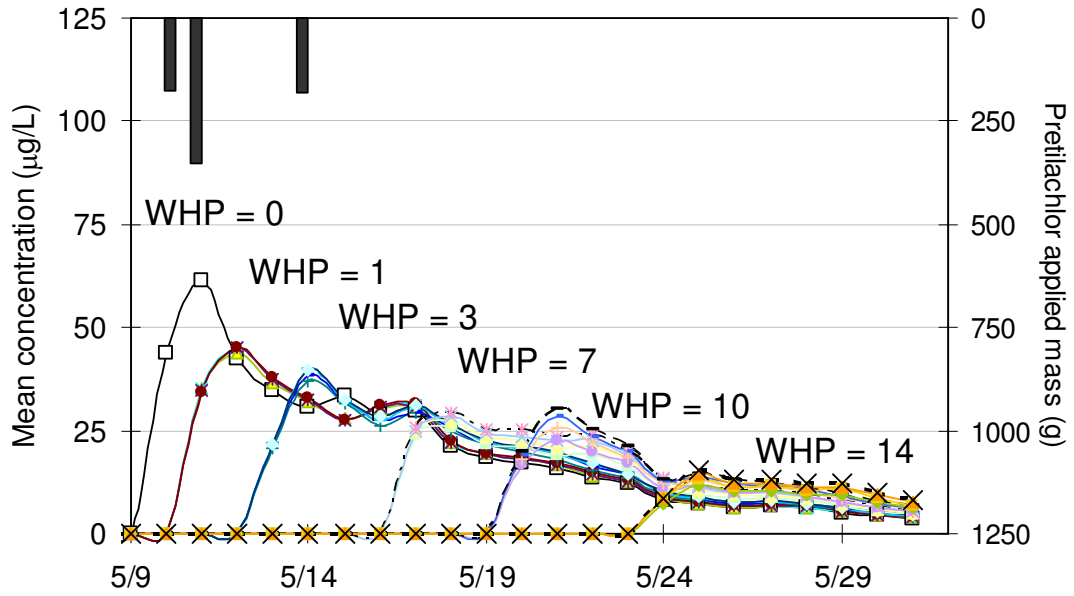


Figure 6. Mean concentrations of pretilachlor in the drainage canal under different water management scenarios

Table 1. Input parameters for PCPF-B model simulation

	Unit	Pretilachlor
<i>General information</i>		
Area of block	m ²	50600
Pesticide treated area	m ²	11820
Date to start simulation		2004/05/01
Simulation period	d	30
<i>Input data for plot simulation</i>		
Water compartment		
Application rate	g m ⁻²	0.06
Solubility of the pesticide	mg L ⁻¹	50
Dissolution rate	d ⁻¹	0.0631
Desorption rate	d ⁻¹	0.1142
Volatilization coefficient	m d ⁻¹	6.0 x 10 ⁻⁴
Photolysis rate	d ⁻¹	0.00083
Biochemical degradation rate	d ⁻¹	0.0714
Factor of light attenuation by crop	d ⁻¹	0.0162
Fraction of UVB over Rs		0.001232
Soil compartment		
Bulk density	g cm ⁻³	0.937
Saturated water content	cm ³ cm ⁻³	0.603
Partitioning coefficient	L kg ⁻¹	13.03
Degradation rate const.	d ⁻¹	0.0368
<i>On application date & amount</i>		See Fig. 2

Table 2. Input water balance and management parameters used in Monte Carlo simulation for evaluation of WHP and EWSD

Parameter	Unit	Value	Distribution ^a	Comment
Climate condition				
Daily rainfall	cm day ⁻¹		Randomly selected from archival data	26-year data
Evapotranspiration	cm day ⁻¹		Corresponding to meteorological data	FAO-56 estimation
Water management scenarios				
Percolation	cm day ⁻¹	0.15 – 0.4	Uniform	Monitoring
Surface drainage	cm day ⁻¹	0.3	Point	Monitoring
H _w max	cm	5	Point	Assumption ^a
H _w min	cm	3	Point	Assumption ^a
EWSD	cm	0, 1, 2, 3	Point	
WHP	days	0, <u>1</u> , 3, 7, <u>10</u> , <u>14</u>	Point	

^aThe assumption was made based on average value of field survey and the recommended value of agricultural cooperatives in the area.

Table 3. Regressed equations for the effect of WHP on cumulative loss of pretilachlor

	R^2	Regressed equation ^a
EWSD = 0	0.9846	$y = -1.1841x + 43.287$
EWSD = 1	0.9784	$y = -1.5605x + 42.733$
EWSD = 2	0.9819	$y = -1.8115x + 42.703$
EWSD = 3	0.9798	$y = -1.974x + 42.384$

Formatted: Font: 12 pt

Formatted Table

Formatted: Font: 12 pt

Formatted: Indent: First line: 0 pt

^a y is the cumulative loss (%) of pretilachlor, x is the water holding period (days)

For Peer Review