

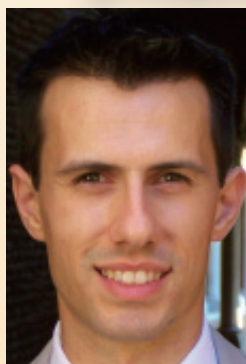


『学長裁量経費による海外研究者  
招聘助成』プログラム



Seminar

at L0031, Lecture Hall Bldg. for the Faculty of Engineering  
August 13<sup>th</sup> 2019, 13:30 - 14:30



Title

Dynamics of a reactive gaseous interface: Use of complex poles to describe the nonlinear evolution

Dr. Christophe Almarcha

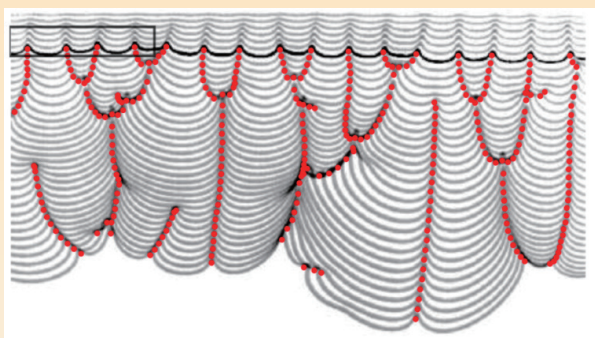
Associate Professor, Aix Marseille University, France

言語/英語  
Language/English

どなたでもご聴講  
いただけます  
Everyone is welcome  
to attend.

Abstract

A premixed flame is a sub-millimeter interface through which a mixture of reacting gas is transforming into burned gas with an increase in temperature and molar volume by a factor 8. This is due to the global exothermicity of hundreds of chemical reactions at play. The gas expansion at the reactive interface induces hydrodynamical instabilities that are wrinkling the interface in a complex dynamics. Some cells are forming and merging in a fashion similar to bubbles in Rayleigh-Taylor instability. However, contrary to that instability, the propagation of the flame induces a limitation of the wrinkling amplitude and it is then possible to describe the evolution of the interface with a PDE equation: the Michelson-Sivashinsky equation. Moreover some analytical solutions consisting of pole trajectories in the complex plane are capable of describing all the dynamics, even in the fully nonlinear regime. This is what we demonstrate experimentally in a quasi-2D burner.



Almarcha et al. "Interface dynamics, pole trajectories, and cell size statistics"  
Phys. Rev. E 98, 030202(R) (2018)

■共催 / Co-Organized by

グローバルイノベーション研究院 ライフサイエンス分野 田川研究チーム  
Institute of Global Innovation "Life Science" Tagawa Team

卓越大学院プログラム  
Excellent Leader Development for Super Smart Society  
by New Industry Creation and Diversity

■お問合せ先 / Contact

グローバルイノベーション研究院 工学研究院 長津 雄一郎  
Institute of Global Innovation Research, Institute of Engineering  
Assoc. Prof. Yuichiro Nagatsu  
Email: nagatsu (ここに@を入れてください) cc.tuat.ac.jp (ext.7656)

